



LEADERS IN FLUID TRANSFER SOLUTIONS



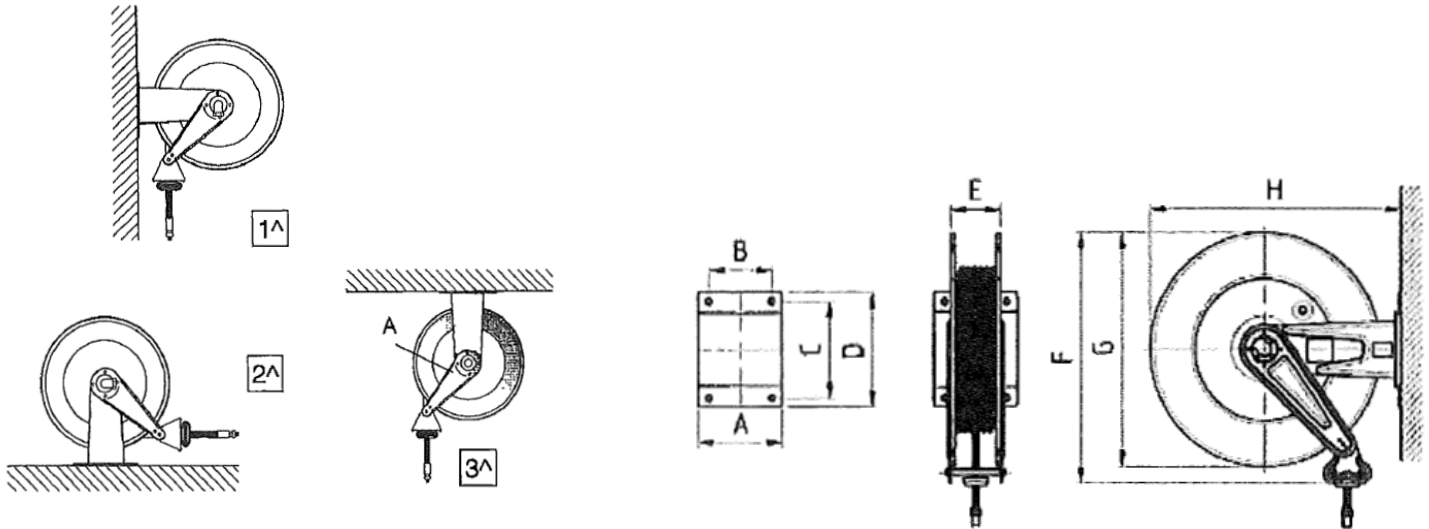
OPERATING INSTRUCTIONS AND MAINTENANCE

Thank you for your purchase of an item of our production and we kindly invite you to read this manual. You will find necessary information for a correct use of the machine you have bought; **we ask you to carefully follow the warnings contained in this manual and read it completely.** Furthermore, please put this manual in a place where it can be kept in good conditions. The content of this manual can be modified without any previous notice and without any obligation in the case we need to add some variations and improvements to the copies we already supplied. The reproduction or translation of this manual or any part of it without our authorization is forbidden.

PRESENTATION HOSE REELS

Hose reels (not swiveling) available:

- steel, painted and chromed 60 and 600 Bar
- stainless steel 60 and 200 Bar
- with and without tube



HOSE REEL INSTALLATION

Possible positions:

- 1^ wall - for single use or in set.
- 2^ bench or floor.
- 3^ ceiling (with swiveling arms A)

Part Number	A	B	C	D	E	F	G	H
DHR1408515	200	150	225	270	120	590	550	600
DHR1508615	250	200	225	270	170	590	550	600

▲ IMPORTANT NOTE

FOR REASONS OF SAFETY AND PRODUCT INTEGRITY, THE OPERATOR MUST LIMIT HIMSELF TO ORDINARY MAINTENANCE (CLEANING ...) WHEREAS FOR EVENTUAL REPAIRS OR EXTRAORDINARY MAINTENANCE, HE MUST TURN TO OUR SALES AND ASSISTANCE CENTRES.

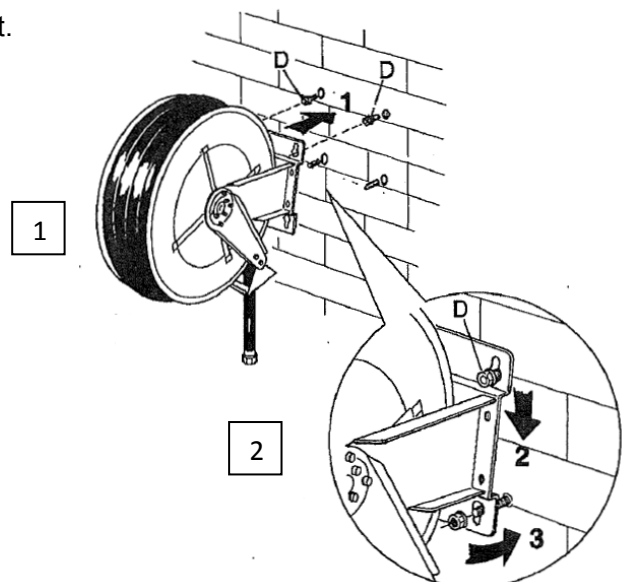
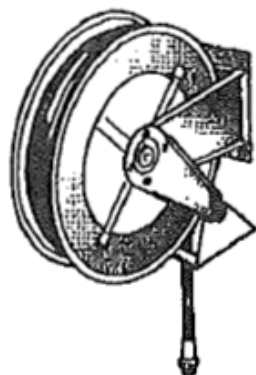
WALL APPLICATION HOSE REEL

After having chosen the ideal position and having checked the consistency or thickness of the wall, making sure that the holes for the plugs do not intercept the water pipes or electrical wiring, fix the bracket to the wall, as shown in fig. 1.

Tighten the nuts D 3 to 4 turns only in top part of the bracket.

Insert the hose reel in the special seats (fig. 2).

Tighten the 4 fixing nuts.



TUBE ASSEMBLY

(hose reel supplied without tube)

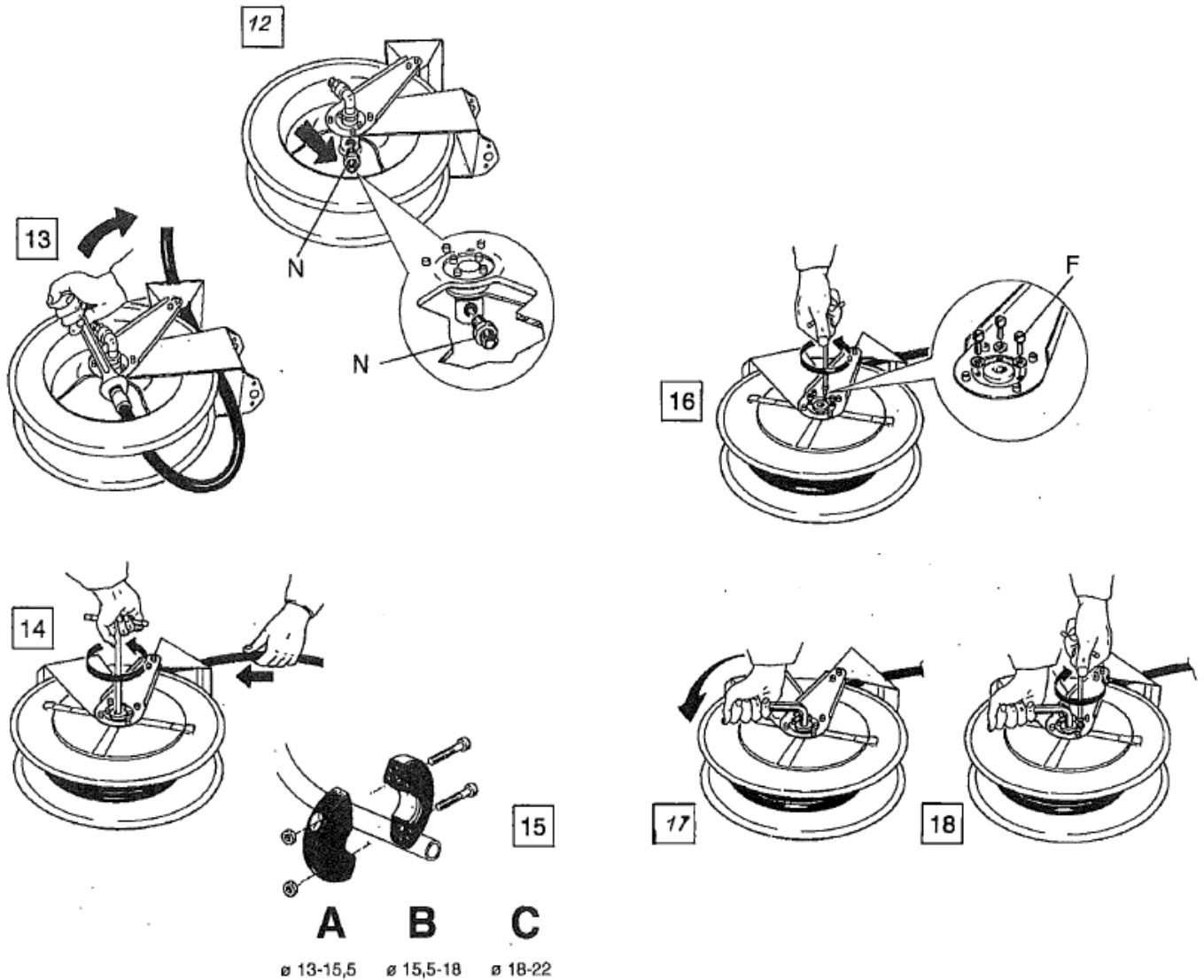
Position the hose reel as shown in fig. 12, fix the nipples N using sealant and fix the chosen tube fig. 13 to the nipples.

Turn the hose reel upside-down and with hexagon spanner 10 mm., wind the tube (fig. 14) and fix the tube stopper at the desired length (fig. 15) choosing the bushing A • B • C suitable for the tube assembled, as the tube stopper.

To load to tube- hose reel spring, remove the 3 screws F (fig. 16) and using a hexagon spanner 14mm. turn the spring-holder bush (fig. 17) anticlockwise 5 complete turns.

Holding the spanner firmly in place, Impress the 3 screws then fix them (fig.18).

See page 4 for installation.



TUBE DISASSEMBLY+ TUBE REPLACEMENT

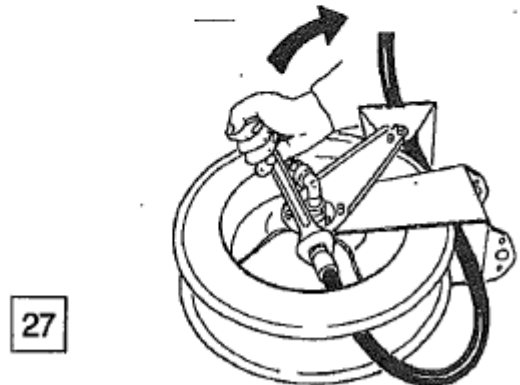
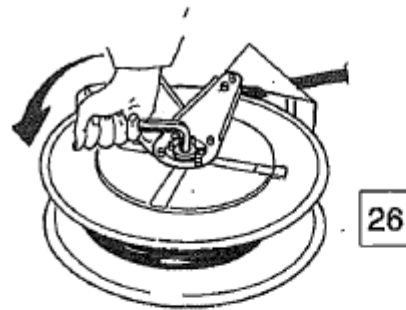
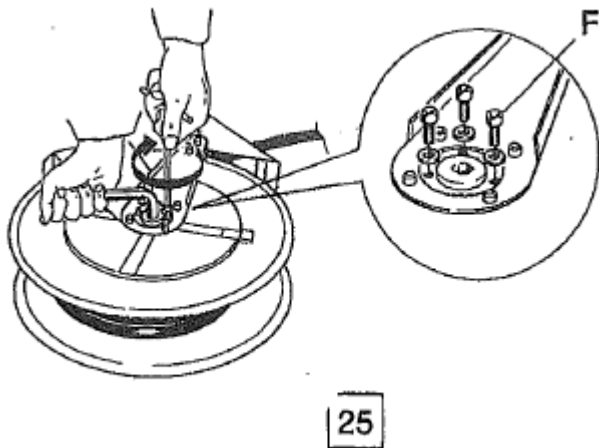
Make sure that the entire tube is wound. Insert a hexagon spanner 14 mm. and, holding it in the position given in fig. 25, unscrew the 3 screws F. Then unload the spring by turning the hexagon spanner 14 mm. clockwise. Follow the spring with the spanner without letting it go (fig, 26). Unwind the tube and unscrew it from the nipples (fig, 27).

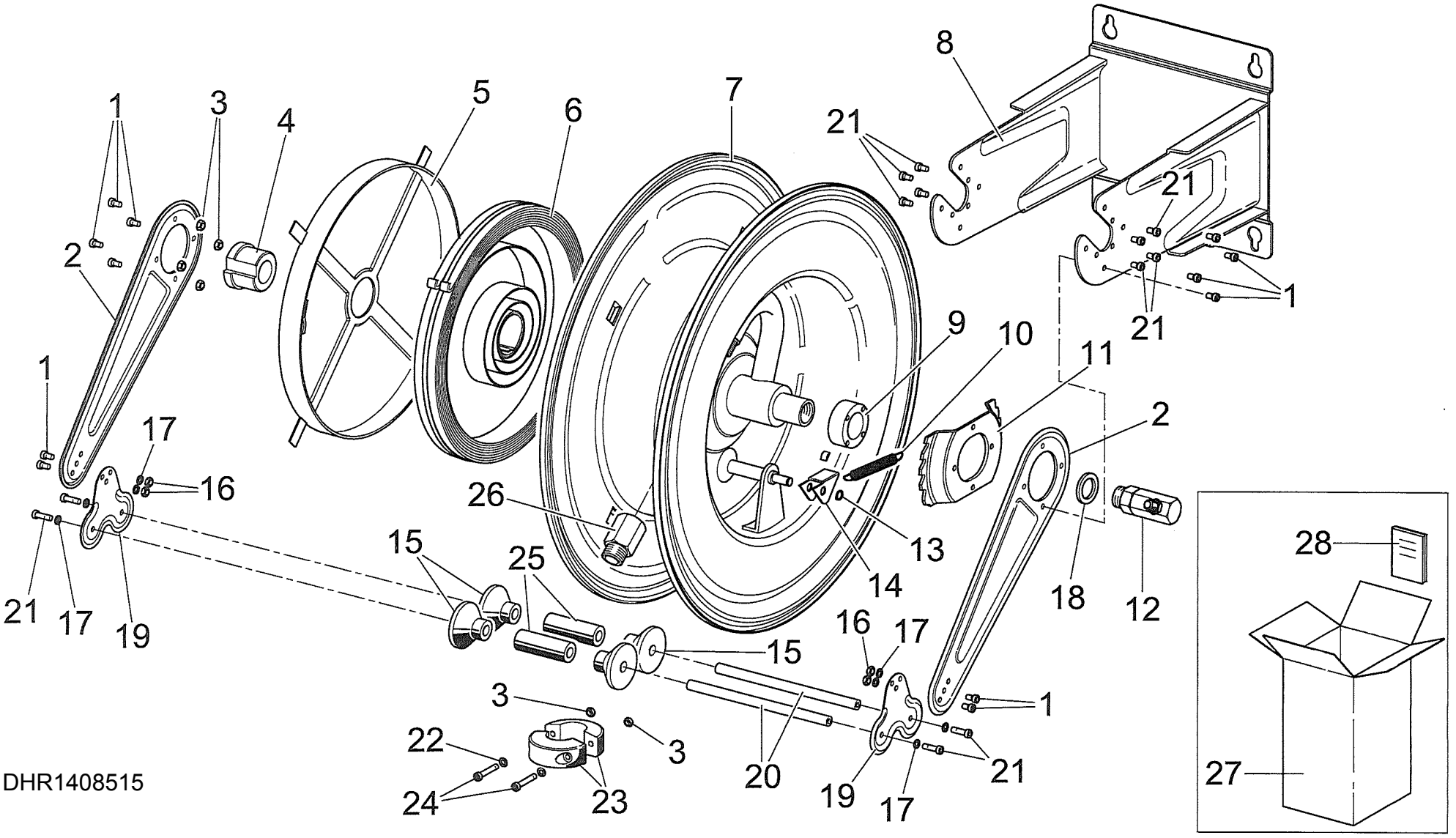
IMPORTANT!

The type of tube to be fitted must be suitable for taking pressures higher than the working pressures given on the label, for each hose reel model.

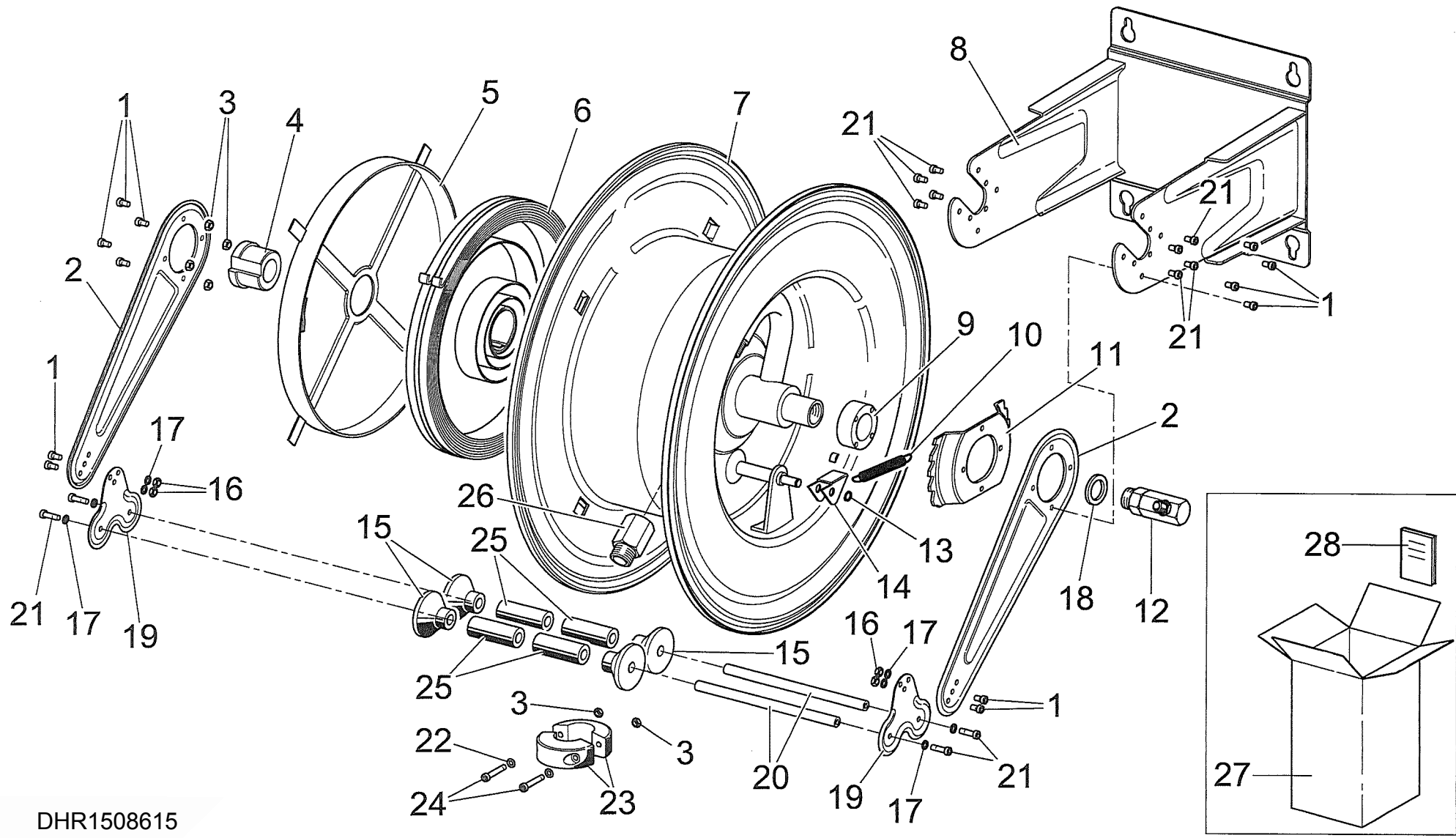
ATTENTION!

The manufacturer declines any responsibility for any faults, troubles or malfunctions eventually caused by the type of tube or by the manner in which the same is fitted by the dealer, user or by others.





DHR1408515



DHR1508615