



# ABS Air/ Water Hose Reel Enclosed 3/8" x 10m HRAW3815

 **High Quality Germany Flexible Hose**  
**High strength ABS engineering plastics cover**

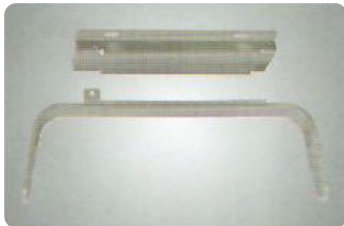


- ABS Plastic outer casing
- Complete with pivot bracket
- Provided with hose ratchet stop device
- Easily removable if constant traction is required
- Fully enclosed structure, light, anti dust and corrosion resistance
- Special material coil spring, pull close freely
- Brass joint and durable

Hose I.D.	3/8" (10mm)
Hose Length	10M
Working Pressure	30 bar / 435 PSI
Inlet Connection	F3/8" G
Outlet Connection	M3/8" G
Hose Type	Germany Flexible Hose

 Read the following precautions and instructions before you begin the assembly or using. Keep these instructions in a convenient location for future reference.

## OPTIONAL

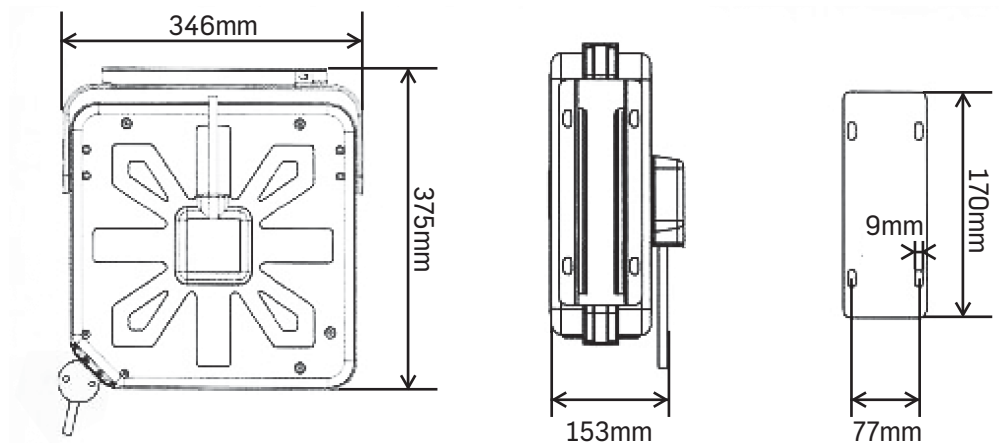


Simple quick stuck bracket



The quick stuck bracket can be fixed to the walls or ceilings easily

## PRODUCT SIZE

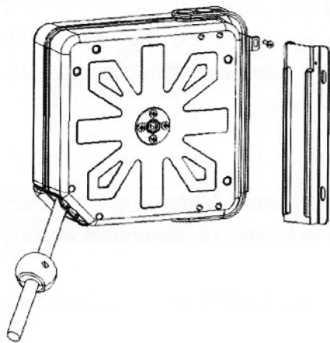
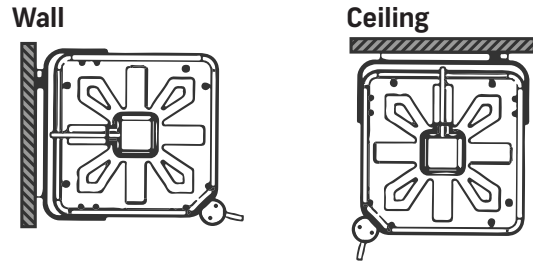


## WARNING

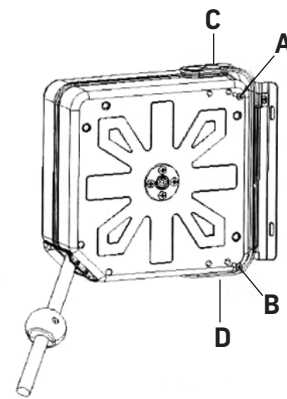
Before use, please note and understand all the contents of the specification, before you use it. Internal containing spring, Prohibit non professional personnel to open, failure to comply with these instructions could result in personal injury or property damage.

## INSTALL

Open the package and check if there is any damage to the hose reel. The hose reel have to install in a reasonable working environment.  
Reasonable installation according to the drawings.



Remove the floor installation, the installation firstly floor needs to be installed at a fixed location, product support card again into the installation of floor chute, tighten the bolt.




Product fixed and swing switch.  
The product was originally a fixed type, remove the A, B bolts, then C, D is swinging the fixed axis.

## OPERATION

Before using, please check equipment for anomalies, if have, please stop using immediately.  
When using, slow uniform alternating hands out to the force (about 3 kg) suitable length, and the ratchet brake locking, high speed and damage of excessive tension can make the product. When using should be avoided in the process of tube bending, trample, avoiding sharp objects

Recycling hose, the hose must be slowly pull out 8 to 30 cm, after the ratchet wheel brake from locking state, holding the hose with the hand, make its slow recovery.

 **Note:** it is strictly prohibited to the automatic recovery, in case of too fast causing bodily injury and damage to the equipment.

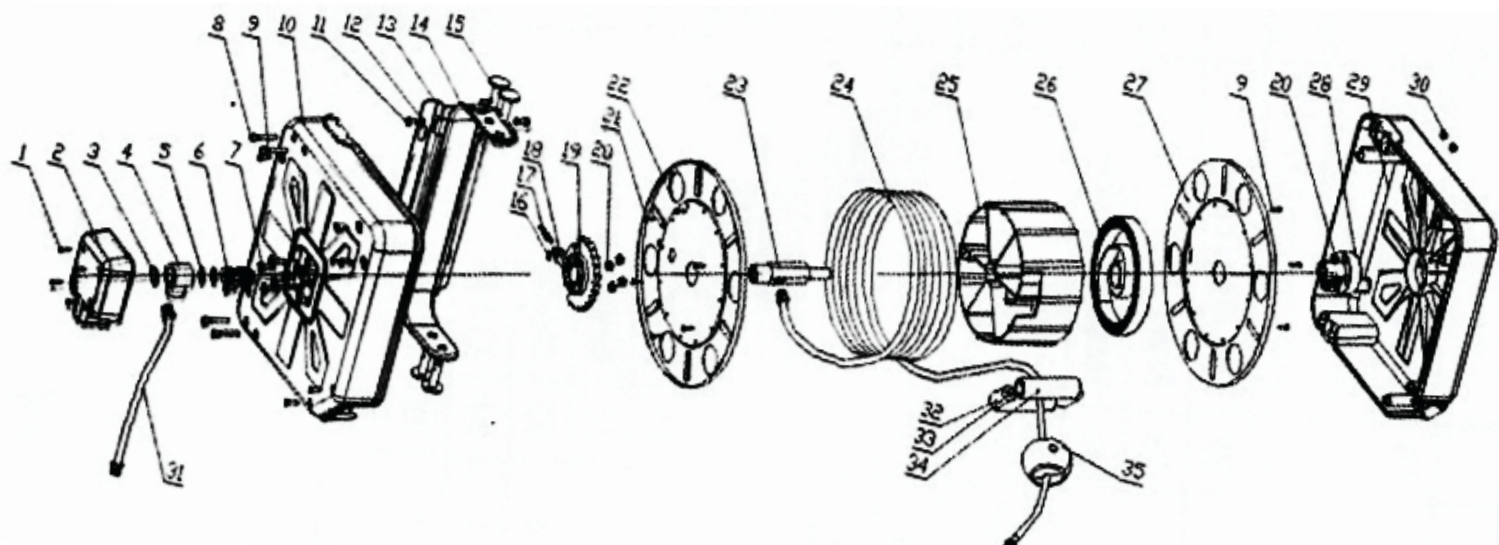
## DAILY MAINTENANCE

In order to ensure proper recycling of the hose, please make use of the cloth dipped in warm water pipes to remove surface dirt. Please do not use may damage the pipe cleaners or solvents.

## SHIPPING

During loading and unloading, forbidden still cast, fall, and trample, transport process, should avoid direct sunlight, rain, contact with corrosive materials and conventional is prohibited.

**PARTS LIST AND DIAGRAM**



Part Number	Description	Qty	Part Number	Description	Qty
1	Self-tapping ST3*12	4	19	Plastic gear	1
2	Side cover	1	20	Lock nut M6	8
3	Retainer	1	21	Self-tapping ST3*12	12
4	Valve body	1	22	Left drum cover	1
5	O-ring	2	23	Shaft	1
6	Valve cover	1	24	Hose assembly	1
7	Screw M6*16	8	25	Plastic	1
8	Bolt M5*30	4	26	Spring	1
9	Bolt ST4*20	6	27	Left drum cover	1
10	Left plastic cover	1	28	Spring fixed seat	1
11	Bolt M5*8	2	29	Right plastic	1
12	Gasket	2	30	Lock nut M5	1
13	Handle fixed seat	1	31	Lead hose	1
14	Handle	1	32	Guide wheel	2
15	Handle fixed	4	33	Guide wheel shaft	2
16	Clamp ring	1	34	Guide wheel	2
17	Ratchet spring	1	35	Hose stop	1
18	Ratchet	1			