



PORTABLE UREA/DEF TANK 12V - 200LTR

MODEL NO: **UD210**

Thank you for purchasing a STM product. Manufactured to a high standard, this product will, if used according to these instructions, and properly maintained, give you years of trouble free performance.

IMPORTANT: PLEASE READ THESE INSTRUCTIONS CAREFULLY. NOTE THE SAFE OPERATIONAL REQUIREMENTS, WARNINGS & CAUTIONS. USE THE PRODUCT CORRECTLY AND WITH CARE FOR THE PURPOSE FOR WHICH IT IS INTENDED. FAILURE TO DO SO MAY CAUSE DAMAGE AND/OR PERSONAL INJURY AND WILL INVALIDATE THE WARRANTY. KEEP THESE INSTRUCTIONS SAFE FOR FUTURE USE.



Refer to instruction manual



Wear protective gloves



Wear eye protection



Wear protective clothing



Wear protective footwear

1. SAFETY

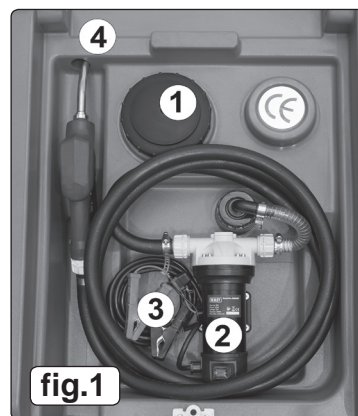
- WARNING:** UD210 must **ONLY** be used for UREA/DEF.
- Place the tank on a flat surface before filling.
- Secure the tank to strong points with ratchet straps before transporting in or on a vehicle.
- Maintain the pump in good condition (use an authorised service agent).
- Replace or repair damaged parts. *Use recommended parts only. Non authorised parts may be dangerous and will invalidate the warranty.*
- Keep the pump clean for best and safest performance.
- Ensure the power supply (vehicle battery) corresponds with the requirements of the pump (12V DC).
- Disconnect from battery when not in use.
- Wear protective gloves, and protective clothing when working around liquids.
- Keep children and unauthorised persons away from the working area.
- DO NOT** place the tank near any heat source.
- DO NOT** start or stop the pump by connecting or disconnecting the battery clamps.
- DO NOT** allow the unit to get wet.
- DO NOT** operate the pump with wet hands.
- DO NOT** use the pump where explosive or flammable vapours may be present.
- DO NOT** tamper with the pump connections.

2. INTRODUCTION

Manufactured from HDPE for the safe transportation and dispensing of UREA/DEF when supplying on site equipment. Supplied with a 12V electric pump, 4mtr electric cable and clamps, and a 4mtr delivery hose with automatic fuel nozzle. Can be safely secured and transported on an ATV, pick-up truck or van, using grooves for tie-down straps and handles for positioning. Not suitable for petrol or diesel.

3. SPECIFICATION

Model.....UD210
 Capacity.....200ltr
 Flow rate.....20ltr/min
 Power.....180W
 Voltage.....12V
 Current.....15A
 Size (W x D x H).....1100 x 800 x 470mm
 Nett weight.....29.56kg
 Duty cycle.....30mins on/30mins off



Item	Description
1	Filler cap
2	Pump On/Off
3	Battery clip
4	Dispenser

4. OPERATION

4.1. TRANSPORT

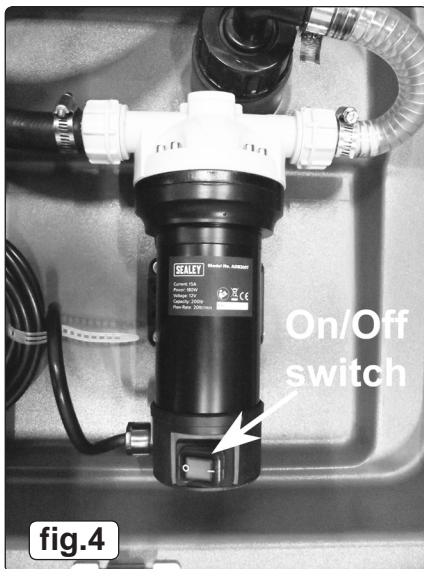
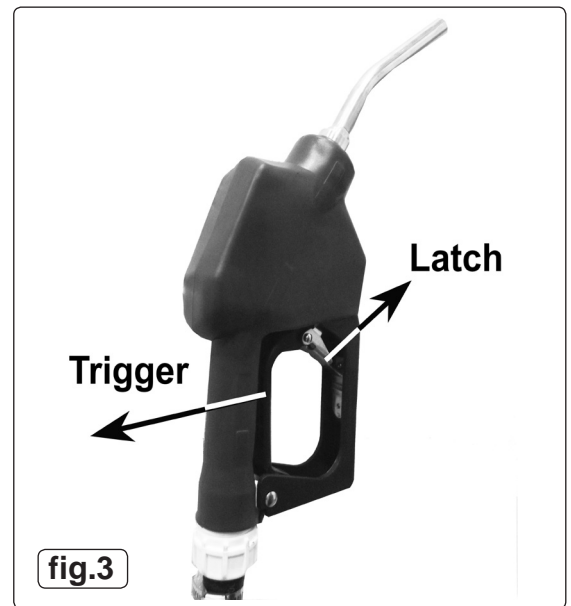
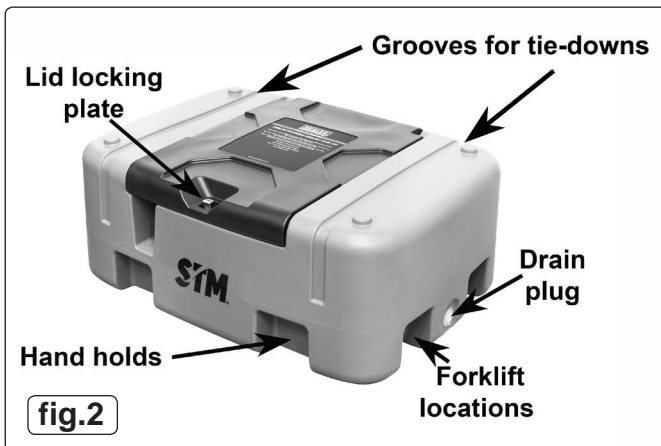
- 4.1.1. Move the empty tank assembly with two persons using the hand holds moulded into the base of the unit (fig.2). **DO NOT** run the pump without fuel in the tank. To do so will damage the pump's internal components and will invalidate your warranty.
- 4.1.2. The full tank can be moved by forklift truck using the fork locations shown in fig.2. Ensure that the filler cap (fig.1.1) is closed before moving.
- 4.1.3. Secure the tank to the carrying vehicle by ratchet straps. Locations for the straps are moulded into the tank.

4.2. FILLING

- 4.2.1. The tank is filled by unscrewing the filler cap (fig.1.1) in an anticlockwise direction. Refit the filler cap immediately after filling.
 - WARNING** take care not to overfill the tank.

4.3. FUEL DISPENSING

- 4.3.1. Before connecting to a battery, make sure that the pump switch (fig.1.2, fig.4) is in the 'off' (O) position. Connect the battery clips (fig.1.3) to the 12V battery, observing correct polarity (red clamp to +ve terminal, black clamp to -ve terminal)
- 4.3.2. Switch the pump switch to the 'on' (I) position.
- 4.3.3. Unwind sufficient hose and place the nozzle in the receiving tank and pull the trigger (fig.3); delivery will commence and continue until the trigger is released.
- 4.3.4. The trigger can be locked in one of three positions by engaging the latch (fig.3) to hold the trigger open. **DO NOT** leave the nozzle unattended with the trigger latched open.
- 4.3.5. Slight pressure on the trigger will release the latch.
- 4.3.6. When the level in the receiving tank reaches the nozzle, delivery will stop automatically.
- 4.3.7. When delivery is complete, switch off the pump.
- 4.3.8. Ensure that hose is wound into its housing on the tank and that the nozzle is secured in its storage place.
- * **DO NOT** operate the pump continuously for more than 30 minutes. The duty cycle of the unit is 30 minutes, after which the motor must be left to cool down for a further 30 minutes.
 - * **DO NOT** run the unit for more than 2-3 minutes with the delivery nozzle closed.



5. MAINTENANCE

- 5.1. The pump contains no user-servicable parts. Repairs should only be undertaken by competent persons.
- 5.2. Check the integrity of all the hose connections periodically. If any leakage is evident, strip the joint and wind PTFE tape around the male thread.
- 5.3. Check all electrical connections and cables for wear and damage. Rectify any faults found.
- 5.4. Keep unit clean, especially the dispenser nozzle. Clean with a damp, soapy cloth. **DO NOT** use abrasive or solvent cleaners.
- 5.5. To drain the tank remove the plug (fig.3) using an appropriate tool.
- 5.6. The pick-up hose inside the tank is fitted with a filter. Regularly remove and clean/rinse this filter using clean and fresh UREA/DEF.



WEEE REGULATIONS

Dispose of this product at the end of its working life in compliance with the EU Directive on Waste Electrical and Electronic Equipment (WEEE). When the product is no longer required, it must be disposed of in an environmentally protective way. Contact your local solid waste authority for recycling information.



ENVIRONMENT PROTECTION

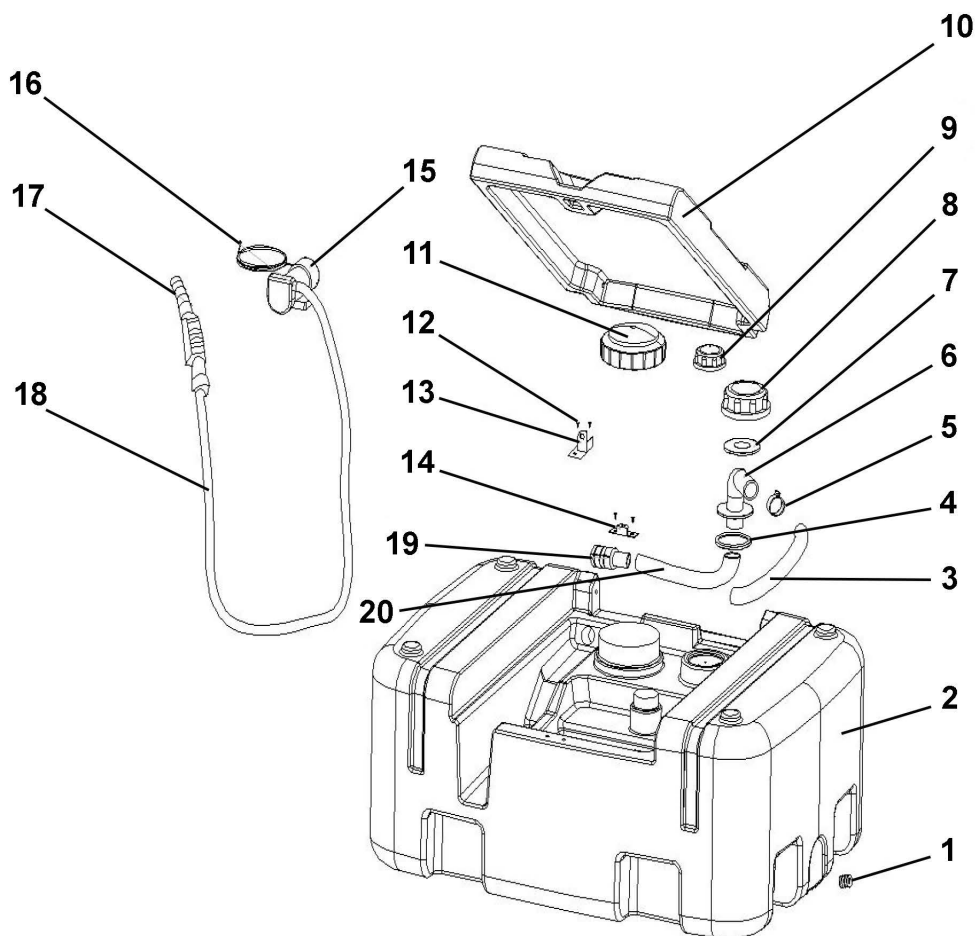
Recycle unwanted materials instead of disposing of them as waste. All tools, accessories and packaging should be sorted, taken to a recycling centre and disposed of in a manner which is compatible with the environment. When the product becomes completely unserviceable and requires disposal, drain any fluids (if applicable) into approved containers and dispose of the product and fluids according to local regulations.

Note: It is our policy to continually improve products and as such we reserve the right to alter data, specifications and component parts without prior notice.

Important: No Liability is accepted for incorrect use of this product.

Warranty: Guarantee is 12 months from purchase date, proof of which is required for any claim.

Parts Information:
Portable UREA/DEF Tank 200ltr 12V
Model No: UD210



Item	Part No.	Description
1	ADB200T.01	Vent Plug
2	ADB200T.02	Tank 200ltr
3	ADB200T.03	3/4" Connection Hose
4	ADB200T.04	Lower Seal for Suction Elbow
5	ADB200T.05	Hose Clip
6	ADB200T.06	Suction Elbow
7	ADB200T.07	Upper Seal for Suction Elbow
8	ADB200T.08	Suction Cap
9	ADB200T.09	Level Gauge
10	ADB200T.10	Tank Lid

Item	Part No.	Description
11	ADB200T.11	Beathing Cap
12	MSP610.S	Machine Screw Pan Head Phillips M6 x 10mm
13	ADB200T.13	Nozzle Holder
14	ADB200T.14	Tank Lid Lock Holder
15	ADB200T.15	Electric Pump 12V
16	ADB200T.16	Bracket for Electric Pump
17	ADB200T.17	Automatic Fluid Nozzle
18	ADB200T.18	Delivery Hose 4m
19	ADB200T.19	Filter
20	ADB200T.20	Hose

NOTE: It is our policy to continually improve products and as such we reserve the right to alter data, specifications and component parts without prior notice. There may be alternative versions of this product, please contact us should you require this information.

IMPORTANT: No liability is accepted for incorrect use of product. Spare parts must be fitted by a competent person

WARRANTY: Guarantee is 12 months from purchase date, proof of which will be required for any claim.